

# THE ROCKHOUND RECORD

Vol. 73, Issue 2

Newsletter for the Mineralogical Society of Arizona, February 2007

## **PRESIDENT**

Betty Deming  
(602) 242-1553

## **VICE PRESIDENT**

Chris Davis  
(623) 523-2333

## **TREASURER**

Andrew Greess  
(602) 909-6657

## **CORRESPONDING**

### **SECRETARY**

Lois Splendoria  
(480) 813-3923

### **EDITOR**

Lois Splendoria  
(480) 813-3923

### **MINERAL CURATOR**

John McLaughlin  
(623) 979-5246

### **FIELD TRIP COORDINATOR**

(Coalition Trips)  
Betty Deming  
(602) 242-1553

### **FIELD TRIP COORDINATORS**

(Club Trips)  
Ed Nichols  
(480) 636-1251  
& Bob Holm  
(623) 247-1325

### **LIBRARIAN DOOR PRIZES HOSPITALITY**

Bob Holm  
(623) 247-1325

### **REFRESHMENTS**

Lynne Dyer  
(480) 396-2393

### **STATUTORY AGENT**

Terry Dyer  
(480) 396-2393

### **WEBMASTER**

Barbara Atkinson

### **BOARD OF GOVERNORS**

Lynne Dyer  
Terry Dyer  
Bob Holm  
KJ Werner  
Ed Nichols

## Upcoming Program - Friday, February 16, 2007

### Travels in Australia - by Dr. Raymond Grant

Ray and Cynthia Grant, who are members of the MSA, have traveled to Australia several times for mineral collecting trips. This will be an interesting, and not-to-be-missed, program. Please plan to attend!



Dave Lay (in foreground), a new MSA member in January 2007 at the Date Creek Field Trip on January 27. Ed Nichols is in the background.

## Welcome New Members!

Dave Lay  
Deana Mae Nelson

Joined Jan. 12, 2007

## DUES ARE DUE!

MSA dues for 2007 are due now. Please mail your dues to Andrew Greess at the following mailing address:

**2016 West North Lane  
Phoenix, AZ 85021**

or you may pay at the February 16, 2007, meeting. The rates are as follows:

**Families & Couples - \$20.00**

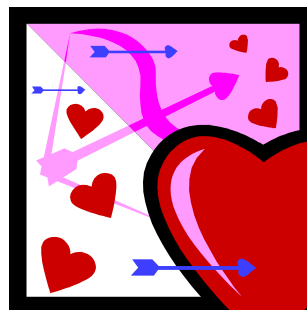
**Single Adults - \$12.00**

**Juniors**

**(18 yrs. and under) - \$2.50**

### **Board of Governors Meeting Friday, February 16, at 6 p.m.**

The Board of Governors will have a meeting on Friday, February 16, at 6 p.m. before the general meeting at 7 p.m. We will meet in the upstairs Board Room at the Museum. Board members should plan to attend.



*Happy  
Valentine's  
Day!*

### One-Liners from the Internet

- Only in America. . . do drugstores make the sick walk all the way to the back of the store to get their prescriptions, while healthy people can buy cigarettes at the front.
- Only in America. . . do people order double cheeseburgers, large fries, and a diet coke!
- Only in America. . . do we leave cars worth thousands of dollars in the driveway and put our useless junk in the garage.
- Only in America. . . do they have drive-up ATM machines with Braille lettering.
- Why is it that doctors call what they do "practice"?
- Why is lemon juice made with artificial flavor, and dishwashing liquid made with real lemons?
- Why is the man who invests all your money called a broker?
- Why didn't Noah swat those two mosquitoes?
- You know that indestructible black box that is used on airplanes? Why don't they make the whole plane out of that stuff?!
- Why don't sheep shrink when it rains?

*Reprinted from the Feb. 2007  
Sedona Red Rocking News*

### Need to Contact the Officers?

**President - Betty Deming**  
***bd\_mac2003@yahoo.com***  
***(602) 242-1553***

**Vice President - Chris Davis**  
***cdgizmoman@aol.com***  
***(623) 523-2333***

**Treasurer - Andrew Greess**  
***abgreess1@aol.com***  
***(602) 909-6657***

**Corresponding Secretary - Lois Splendoria**  
***chimes@extremezone.com***  
***(480) 813-3923***

### President's Message

It's going to be a fantastic year for MSA. We have a wonderful group of officers, board members and volunteers so we can't go wrong. We have two new field trip coordinators. They are Ed Nichols and Bob Holm. Terry Dyer will be our Statutory Agent.

Our club came through again with many volunteers to work at the A. L. Flagg show in Mesa. Thanks again to everyone!!! Don, Sally, and Shirley Fiske; Barbara Atkinson; Deanna Smith; Terry Dyer; and Andrew, Sam, and Rachel Greess. A special thanks to Bob Holm for his many hours at our booth, plus picking up rocks and wheel from Marc Watson's, setting up, tearing down, and taking rocks and wheel back to Marc's.

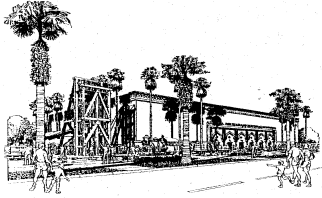
At our meeting on Jan. 12th there were eight visitors, and two of them joined MSA. Chris Davis introduced our speaker, Rob Lazarus, who presented an interesting educational program on moon rocks, meteorites and slides of the Apollo.

There were 14 people on our field trip to Date Creek Jan. 12th. One of our new members, Dave Lay, dug just the right spot and left with a bag of small quartz crystals.

Our Feb. 16th program will be presented by Ray Grant, one of my favorite speakers. He is a Life Member of MSA, a retired professor of Geology at Mesa Community College, and coordinator of the A. L. Flagg Show. He will show slides and talk about his and his wife's trips to many mines in Australia. This will be an excellent program.

The board meeting will be at 6:00 p.m. in the board room upstairs at the Mineral Museum on the 16th of February.

***HOPE TO SEE YOU AT THE MEETING,  
Betty L. Deming***



FRIENDS OF THE ARIZONA MINING & MINERAL MUSEUM  
A SUPPORT GROUP FOR THE ARIZONA MINING & MINERAL MUSEUM.

---

December 1, 2006

Mineralogical Society of Arizona  
c/o Sally Fiske  
42011 N. Astoria Way  
Anthem, AZ 85086

Dear Ms. Fiske and Members:

On behalf of the Officers and Board Members of the Friends of the Arizona Mining and Mineral Museum (FAMMM), we wish to thank you for your generous support of our foundation and Museum by joining the annual Business Membership level at \$500. The Mineralogical Society has been a generous supporter of FAMMM the past three years, and it is appreciated. Your club has given us that extra boost, which has allowed us to support the museum with some of the volunteer activities and expenses that Sue wishes to pursue. Some of your members volunteer weekly at the Museum or Department and for our Family Days, which we appreciate.

As you may know we have established a new Club Membership category. Your club has monetarily given twice as much as other clubs. Therefore, we are extending all the Club Membership privileges to the Mineralogical Society. Paying members of your club now receive 10% off in the store and free admission to the museum when they show their Mineralogical Society membership card at the front desk. If they forget their card, then they need to let the tour guide at the front contact station know they are members of the Mineralogical Society. The greeter will then look up their name on your club membership list, which is in the Club Directory folder. When making purchases at the store, please inform the cashier you are entitled to 10% off before they ring up the merchandise.

Since the beginning of our organization, we have acquired several grants. However, FAMMM cannot use any of these funds for foundation costs. Your Business Membership enables us to support some volunteer events, produce the newsletter, support our website and pay many miscellaneous expenses which include grant fund-raising. Thank you again for your generous support of FAMMM the past three years.

Sincerely,

Charles Connell  
Chairman of the Board

## Upcoming Shows

### **February 17-18, 2007 - Mesa**

#### **"2007. . . Rocks From Heaven" - 41st Annual Gem, Jewelry & Rock Show**

Sponsored by: Apache Junction Rock and Gem, Inc.

Skyline High School in Mesa, AZ - Located near the border of Apache Junction and Mesa at 845 South Crismon Rd., Mesa, AZ, 85208

Take the U.S. 60 (Superstition Freeway) and get off at Exit 192

The school is north of the Freeway.

Hours: Sat. - 10:00 a.m. to 5:00 p.m.; Sun. - 10:00 a.m. to 4:00 p.m.

Admission: Adults - \$3:00, Students - \$1.00 with Student Card

Children Under 12 Free (Accompanied by an Adult)

Show Chairperson: Sharon Szymanski, 480-671-6191

### **February 17, 2007 - Phoenix**

#### **Prospectors' Day**

Arizona Mining & Mineral Museum, 1502 W. Washington, Phoenix, AZ, 85007

Gold panning demos, Gold panning equipment, and more, activities for children

Sponsored by: Arizona Mining & Mineral Museum

and Arizona Prospectors Association

Hours: 10:00 a.m. to 4:00 p.m.

Show Chairperson: Charles Connell, 12912 W. Solano Dr., Litchfield Park, AZ, 85340  
623-935-2007

### **February 24 - 25, 2007 - Wickenburg**

#### **Gold Rush Days, 54th Annual Gem & Mineral Show Sale**

Wickenburg Community Center, 160 N. Valentine, Wickenburg, AZ

Hours: Fri., Sat. - 9:00 a.m. to 5:00 p.m.; Sun. - 10:00 a.m. to 4:00 p.m.

Admission: Free; Parking: Free

Dealers Contact: Lucille Burroughs, P. O. Box 26375, Wickenburg, AZ, 85358, 928-684-0099

### **March 23, 24, 25, 2007 - Cottonwood**

#### **Verde Valley Gem and Mineral Show & Jewelry Show**

Mingus Union High School, 1801 E. Fir St., Cottonwood, AZ, 86326

[www.mingusclub.org](http://www.mingusclub.org)

Sponsored by: Mingus Gem and Mineral Club

Hours: Fri., Sat. - 9:00 a.m. to 5:00 p.m., Sun. - 10:00 a.m. to 4:00 p.m.

Admission: \$3:00, children free

Show Chairperson: Doug Evenson, 807 S. Tigres Trail, Cottonwood, AZ, 86326, 928-634-0459

E-mail: [dougevenson@verdecomm.net](mailto:dougevenson@verdecomm.net)

**Meeting Minutes  
Board of Governors  
January 12, 2007  
By Lois Splendoria**

The meeting was called to order by president Betty Deming. In attendance were KJ Werner, Lynne Dyer, Terry Dyer, Ed Nichols, Bob Holm, Andrew Greess, Gilbert Flores, and Lois Splendoria. Chris Davis joined the meeting in progress. Betty asked everyone to introduce themselves and tell what their current duties are in the club. **(EDITOR'S NOTE: Please refer to the newsletter for a list of the board members' functions.)** Andrew suggested that we have a contact list for the board members, and Lois offered to compile this and bring it to the next board meeting.

Bob Holm said the MSA Wheel was the most popular thing at the Flagg Show. He said that somebody at the the show asked if we would consider bringing the Wheel to birthday parties. All of the board members were thoroughly impressed and amused by this idea, and some discussion followed about the possibility of doing this. Bob said that the club ran out of membership applications at the Flagg Show. Betty said she had been contacted by someone who wanted to join but could not attend the meetings.

Betty said that the club needs receipts for everything that they reimburse, and that prior permission is needed to purchase anything that is purchased on behalf of the club. This includes anything that is purchased at gem shows to use for the Wheel. KJ said he could get Wheel material at a wholesale price, since he is a dealer.

Betty reminded everyone that is important to submit items for the newsletter on time. Lois said that she had given submission schedules to the appropriate parties. Ed Nichols requested that he be sent a paper newsletter, as he no longer has his previous e-mail ID.

Betty said that she wants to have a suggestion box, so those attending can submit comments to her. The board members thought this was a good idea, and it was suggested that it be placed up at the front table. Terry offered to make a box that looks like a mineral.

Betty encouraged everyone to welcome the visitors and suggested that they be listed in the newsletter every month. It was suggested that a follow-up postcard be sent to the visitors. Andrew said he has a computer program for postcards, and offered to use it for this purpose. It was suggested that it would be a good idea to get the visitors' e-mail ID's. Lois offered to redesign the visitor log to include a place for the visitors to write in their e-mail addresses. Andrew suggested handing the membership form to visitors at the end of every meeting. Gilbert suggested giving visitors a welcome packet when they come to the meetings. It was pointed out that we need to make sure that Bob Holm has new membership packets, since he is the Hospitality Chairman. Andrew offered to stand up at the end of the meeting to introduce himself and thank everybody for attending and to invite them to join. He will see Bob after the meeting to get the names of the visitors. Chris suggested calling people who belong to the club but have not been to the meetings lately. Betty talked about some of things that her metal detecting club does for activities.

Andrew suggested giving small minerals to juniors who come to the meetings. Terry asked if we could have a small barrel for the kids to pick out a free specimen. Lynne offered to bring some boxes of specimens for this purpose.

Betty suggested bringing a sample of a mineral that may be collected on that month's field trip. Andrew suggested asking people who are interested in the field trips to assemble after the meeting to get instructions. The January 27 club field trip is to Date Creek to collect quartz. The newsletter article did not mention what was going to be collected on this trip. Lynne suggested bringing material from the field trip to the meetings for the juniors. Chris suggested bringing a sample of material from the field trip and talking about how it was formed and doing some educational explanation. He said that Michael Madsen had suggested doing some hands-on activities.

*(Continued on Page 6)*

Andrew reinforced the idea of making new members comfortable and making them want to come back to another meeting. He said it is important that the meetings be well-run, so that we have time for a Show and Tell period. Andrew asked what we can do to make new members feel welcome, so that they will come back. He offered to say something about the next month's program and the field trip at the end of the meeting. He also said that some follow-up contact should be made when someone joins the club.

The February 16 meeting is scheduled to be a joint meeting of the MSA and Arizona Mineral and Mining Museum Foundation (formerly the A. L. Flagg Foundation) in order to have a special presentation by visitors from the University of China of Geosciences at Wuhan, including the Curator of the Yifu Geological Museum. **(EDITOR'S NOTE: This program has been postponed until the March 9 meeting, due to the presenters' availability. Ray Grant will present a program on February 16 on his travels to Australia and his collecting trips there.)**

Ed said he is interested in setting up mineral displays at the schools and talked to Chris about this. Ed asked if anybody had some specimens to contribute. Chris mentioned how much he enjoyed seeing Marc Watson's mineral collection at the recent swap meet at her home.

The group discussed ordering badges for the new members. Terry suggested looking for an alternate supplier for the badges.

Lois suggested that the board members submit agenda items to Betty ahead of time, so that the agenda could be structured to address everyone's input. The meeting adjourned at 7:55 p.m.

**General Meeting Minutes**  
**January 12, 2007**  
*By Lois Splendoria*

The meeting was called to order by president Betty Deming. Bob Holm welcomed eight visitors: Deana Nelson; Dave Lay; Dave, Cheri & Rachel Wissenbach; Gary and Sheri Hanson; and Betty Moss.

Betty introduced the new officers: Chris Davis, Vice President; Andrew Greess, Treasurer; Bob Holm, Hospitality Chairman; Lynne Dyer, Refreshments Chairman; Ed Nichols, New Board Member; and Lois Splendoria, the continuing Newsletter Editor. There was no Treasurer's Report.

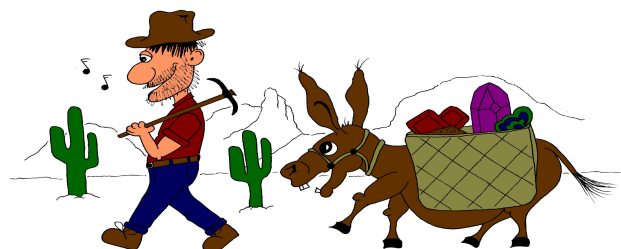
Joanne Hesterman announced the February 17 Prospectors Day/Museum Family Day at the Museum and distributed some flyers. She pointed out that soda pop is not allowed in the Museum Classroom. She suggested a container with a secure lid and asked everyone to be careful with their drinks.

Betty announced the field trips for this month and also announced the information about the February 16 program. We will be meeting on the third Friday in February, to accommodate the Tucson Show.

Betty thanked all of the volunteers who worked at the A. L. Flagg Show: Bob Holm; Don, Sally, and Shirley Fiske; Barbara Atkinson; Deanna Smith; Terry Dyer; and Andrew, Sam, and Rachel Greess. Bob Holm manned the club's booth at the show during the whole weekend. Thank you, Bob!

Chris Davis introduced Bob Lazarus, tonight's speaker. He asked those attending to let Bob Lazarus know if they want him to come to their children's school. For more information about tonight's topic, visit the following web site: <http://microgravity.nasa.gov>. Chris thanked the speaker for his presentation.

Andrew Greess made announcement about dues being due, thanked everyone for coming and invited the visitors to join the club, and made an announcement about the February 16 program. Refreshments were enjoyed by all, and everyone



**Club Field Trip – Mineralogical Society of Arizona**  
**Sat., Feb. 24, 2007**  
**Contributed by Ed Nichols**

**Location – Saddle Mountain**

A light colored volcanic mountain located a few miles south and west of Tonopah, AZ, off I-10 west of Phoenix.

Material found is as listed in most rock collectors' books: desert rose, fire agate, and small quartz crystals. There are also copper minerals and a rose quartz location, which I found and then lost. Please! Someone help me find my lost rose quartz mine!

**Tools Needed**

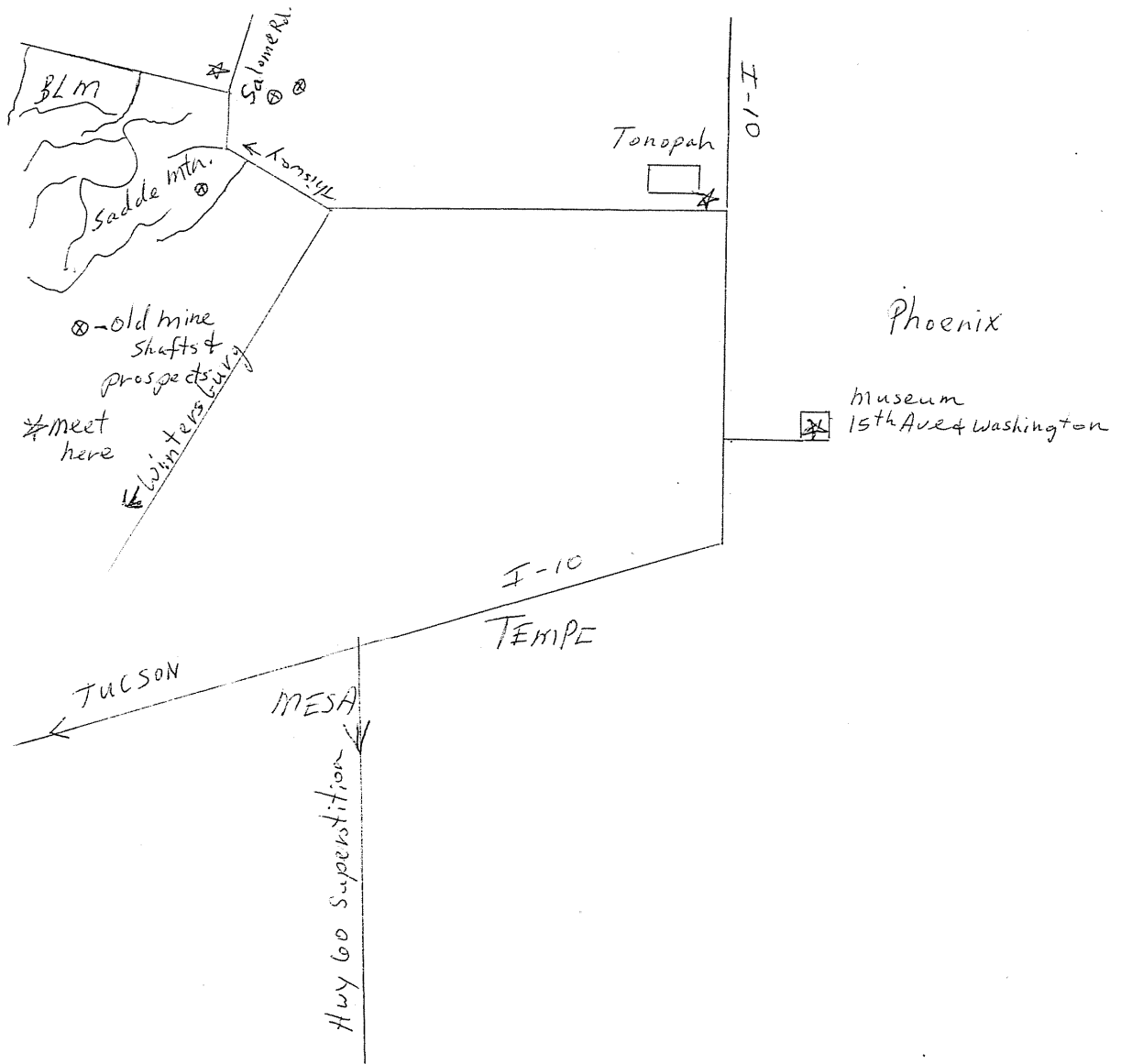
For agate and desert rose on surface, the best tools are good eyes and low sun angle. For the old mine shafts and copper prospects, picks and a good rock hammer are necessary, in addition to caution! Mine shafts out here are straight down and not fenced. My wife and I have collected here for about 30 years and still like the variety and scenery. BLM campsites are available, or rough it on your own in many spots around the mountain.

We will meet at the Arizona Mining and Mineral Museum at 7:30 a.m. We will go out west on I-10 to Tonopah, about 60 miles. Plan on meeting the group at 9:00 a.m. at Tonopah. Gas and goodies are available here. We should leave Tonopah by 9:30 a.m. for the short drive to Saddle Mountain. Let's get our final plan of action settled at the road junction, Salome Rd. and the ranch road that heads southwest on the back side of Saddle Mountain. Would like to meet back here at 2:30-3:00 p.m. for the showdown. Don't worry; this is not the OK Corral! It's for the prize for the best find. I am the Judge.

Ed Nichols  
(480) 636-1251

**Please refer to the map on the next page.**

**Club Field Trip - Mineralogical Society of Arizona**  
**Sat., Feb. 24, 2007**  
**Contributed by Ed Nichols**





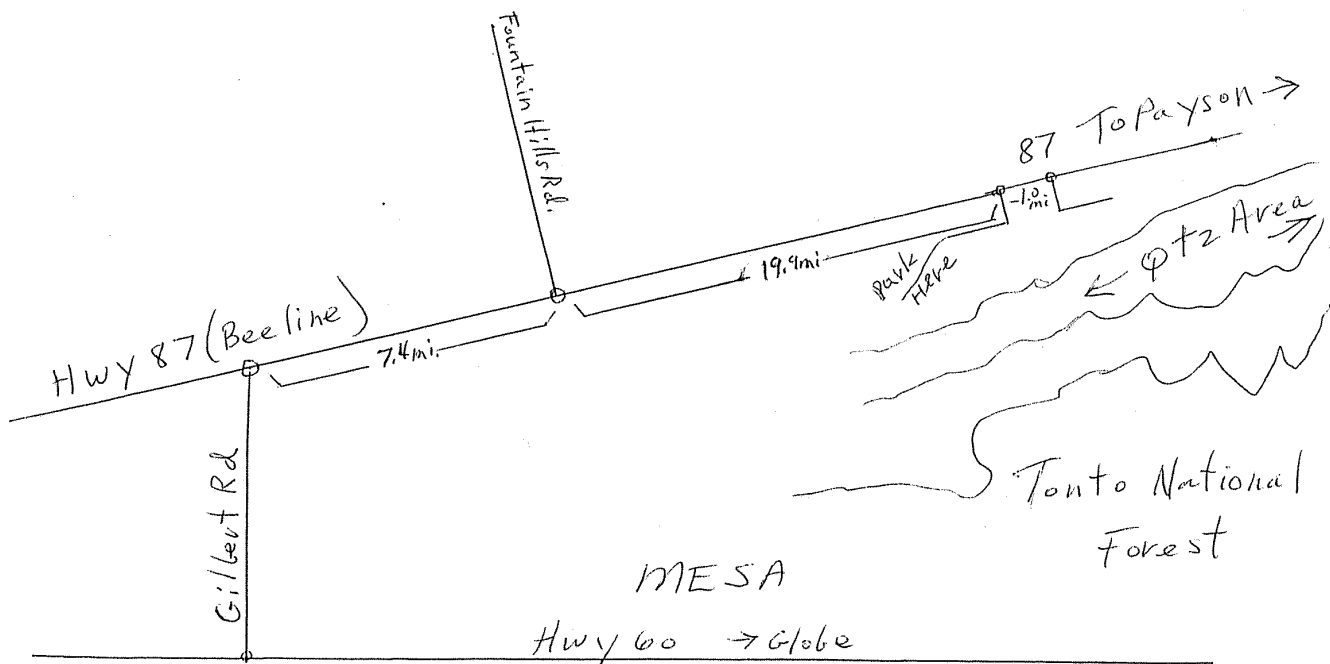
**Coalition Field Trip**  
**Sat., March 24, 2007**  
**Club Sponsor – Mineralogical Society of Arizona**  
**Contributed by Ed Nichols**

Meet at Hwy. 87 and Gilbert Road at 8:15 a.m. We will make a brief stop at Hwy. 87 and Fountain Hills Road at 8:45 a.m. for gas, etc. Leaving there 9:00 a.m. for the mineral location. The site is 27.3 miles going north from Gilbert Road and Hwy. 87 (Beeline). It is 19.9 miles from Fountain Hills Road. As you near the turnoff, get in the right turnoff lane and make a right over the cattle guard to the parking lot. Mineral found is compacted quartz crystals with unusual triangles and angular shapes in the compacted quartz. All material is on the surface. Wear good shoes, preferably boots.

The granite in this area is about 1.5 billion years old, one-third the age of Earth. Writing this in January, I'd make a weather prediction, but Ed Phillips would be mad at me. Carry lunch or late day snacks, or sandwiches that you prefer. Carry plenty of water. For tools, rock hammer, long screwdriver, or other prying tool. Digging won't be necessary; only reason for rock hammer is for additional prying power. Bring spray bottle with a little Purex added to the water (a couple of tablespoons per quart). Don't drink this; it's for the hot quartz!

Please meet at the parking lot at 2:00 p.m. for showdown (Not High Noon!). Don't worry—it's for the prize for the best find. I'm the Judge.

Ed Nichols



**LOIS SPLENDORIA**  
MINERALOGICAL SOCIETY OF ARIZONA  
1502 West Washington  
Phoenix, AZ 85007

**Address Correction Requested**



**EXCHANGE EDITORS:**  
Please send all newsletters to the return address listed above.

**Mineralogical Society of Arizona**  
Founded 1935  
A Non Profit Organization  
[www.azminerals.com](http://www.azminerals.com)

**Purpose:** To promote popular interest in the various Earth Sciences, and particularly the fields of Geology, Lapidary, Mineralogy, and related subjects. ID badges are available from the Treasurer.

**Meetings:** 7:00 p.m. at the Arizona Mining and Mineral Museum, 1502 W. Washington, Phoenix, AZ, *on the second Friday of the month, September through June (except February, which is the third Friday). AFTER TRYING OUT TUESDAY NIGHTS, WE ARE GOING BACK TO FRIDAY NIGHTS!!*

**Dues:** Families & Couples - \$20.00, Single Adults - \$12.00, Juniors (18 yrs. and under) - \$2.50. Please mail your dues to Sally Fiske, 42011 N. Astoria Way, Anthem, AZ, 85086.

**Newsletter:** Reprinting permission granted with proper credit given. Unless otherwise noted, articles are written by the Editor.

First Class Mail

<b>UPCOMING MEETINGS</b>	
<b>EFFECTIVE JANUARY 1, 2007, WE ARE RESUMING OUR FRIDAY MEETINGS</b>	
<b>FRIDAY</b>	February 16, 2007
<b>THIRD FRIDAY IN FEBRUARY, DUE TO TUCSON SHOW</b>	
<b>FRIDAY</b>	March 9, 2007
<b>FRIDAY</b>	April 13, 2007
<b>FRIDAY</b>	May 11, 2007

#### **AFFILIATIONS**

**Rocky Mountain Federation of Mineralogical Societies**  
[www.rmfmts.org](http://www.rmfmts.org)

**American Federation of Mineralogical Societies - [www.amfed.org](http://www.amfed.org)**